

# IS-1/IS-1X

## IMAGE PROCESSING SYSTEM

**Easy setups and operation with spring parts dedicated system**

IS-1 applicable to MNO equipped models for measuring  
free length, outside diameter and angle

IS-1X applicable to extension machines for checking hooks;  
open distance, number of turns and so on

Stable and high speed processing with triple-CPU performing in parallel



### **ORII & MEC CORPORATION**

1-17-24 Kamiaoki-Nishi Kawaguchi-shi Saitama 333-0845 Japan  
TEL: (81) 48-256-3511 FAX: (81) 48-256-3595  
<http://www.oriimec.co.jp/> e-mail: [info-spring@oriimec.co.jp](mailto:info-spring@oriimec.co.jp)

**FEATURES**

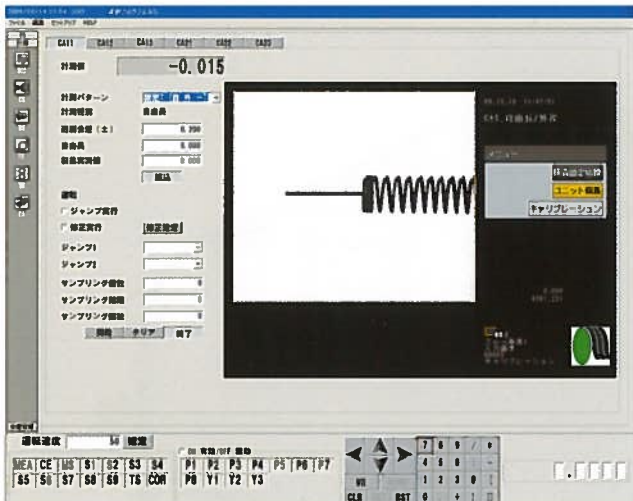
- Easy setups and operation with spring parts dedicated image processing system.
- Image of defective parts can be saved on SD card. (IS-1 available for angle error image.)
- Measuring spring parts of varied sizes can be made with wealth of cameras and lens.
- Compact lamp using light guide plate
- Stable and high speed processing with triple-CPU performing in parallel
- There are two kinds model, IS-1 applicable to MNO equipped models and IX-1X applicable to extension models.

**IS-1 (applicable to MNO equipped models)**

- 1 camera is included as standard spec. Free length, outside diameter and angle can be measured at one time or respectively.
- Up to 2 cameras can be used.
- Even though one IS-1, it can be shared across several MNO equipped machines.
- Monitoring is shown on MNO screen.

**IS-1X with monitor (applicable to extension spring machines)**

- 2 cameras are included as standard. Each camera enlarges hook portions to check outside diameter, open, number of turns and so on for sorting.
- It is applicable to CLS10V models.



MNO monitor for IS-1 setup



IS-1X setup screen

**SPECIFICATIONS**

- Resolution 0.05mm
- Minimum pixel 0.004mm (Inspect Region 10mm x 10mm)
- Pixels 300,000 (640x480)
- Net weight 5kg
- Power source AC100V

**STANDARD ACCESSORIES**

- Main unit
- Camera Lens
- Macro ring
- Lamp
- Cables
- Camera stay, Lamp stay

